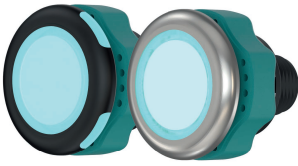


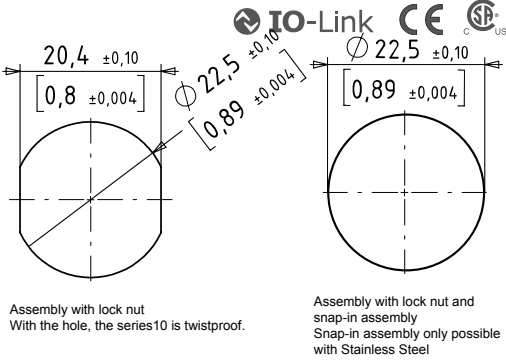
Original Operating Instructions



series10 Standard Signal
series10 Stainless Steel Signal



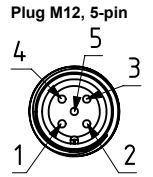
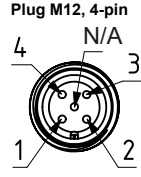
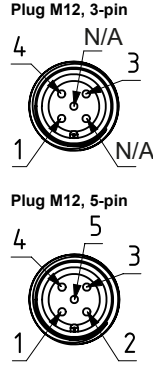
Drilling pattern



Technical specifications

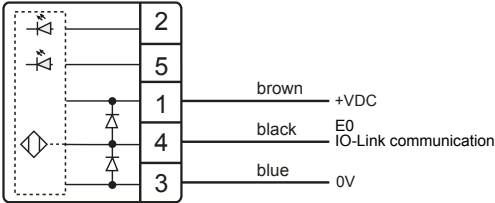
series10 Signal	
Operating voltage	DC 24 V (8.4 to 32 V)
Reverse polarity protection	Protection of all cables/lines
Short circuit protection	Protected against short circuit and overload
Power consumption at 24 V	Max. 40 mA
Operating temperature	-30 °C (-22 °F)...+65 °C (149 °F)
Degree of protection IP	Front side IP6K9K maximum unevenness in mounting surface < 0.1 mm
Degree of protection IK	IK08
Communication interface	IO-Link specification V1.1
Control voltage E1/E2	on 80%U _{y+} off 0 to 20% U _{y+}
max. altitude	2000 m above sea level with "CSA listing"
Relative air humidity	Max. 95%, non-condensing

Connection options



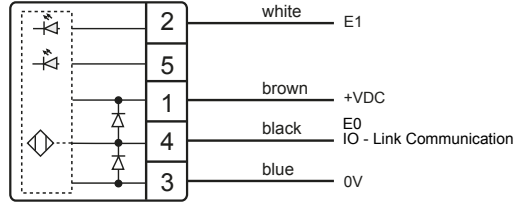
5-pin strand
200 mm [7.87 inch] single strands with wire end ferrules
Wire cross-section strands 0.34 mm² [AWG22]

Connection plan 3-pin



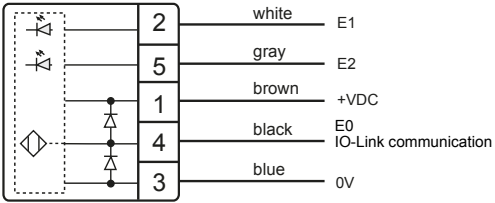
The product description will indicate the configuration.

4-pin



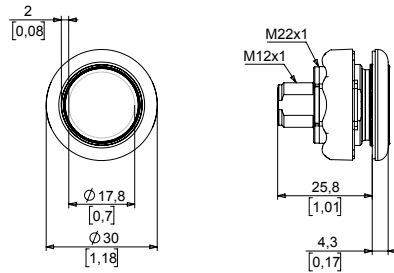
The product description will indicate the configuration.

5-pin



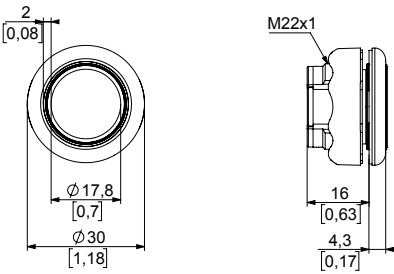
The product description will indicate the configuration.

Dimensional drawing series10 Stainless Steel

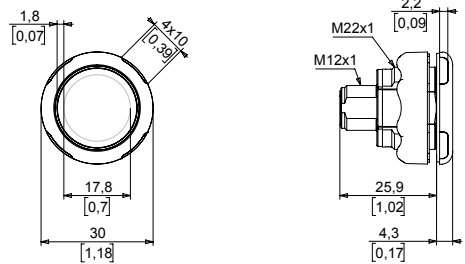


M12 variant

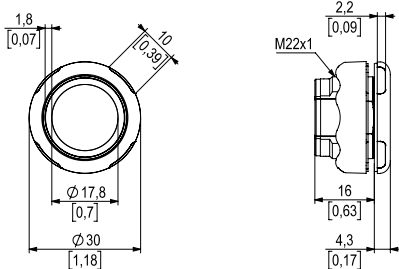
Dimensional drawing series10 Standard



Strand variant



M12 variant



Strand variant

Metric and imperial measurements are used in drawings. Imperial measurements are marked with [].

Intended use

The series10 Signal is used for the visual display of machine states by controlling different colors. The signal light that can be controlled and parameterized with IO-Link is intended for use in accordance with the items listed here, the values from the Technical Specifications section and the product description.

- Only connect the product to a limited energy source as per IEC 61010 or to an NEC class 2 power supply unit.
- Source current < 4 A at maximum operating voltage.

Reasonably foreseeable misuse

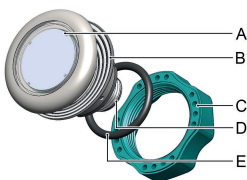
Any use other than as specified in the section **Intended use** or extending beyond this is deemed to be improper.

The series10 Signal is not suitable for:

- Use in vehicles that prescribes the use of UN ECE regulations.
- Use in potentially explosive atmospheres.
- use as a safety component as per directive 2006/42/EC

Stainless Steel

A	series10 Signal
B	Flat seal (fitted)
C	Lock nut
D	Connection
E	O-ring (only required for snap-in assembly and can be ordered separately)



Assembly

series10 assembly with lock nut

Requirements:

- Mounting surface is level and clean (maximum unevenness in mounting surface 0.1 mm).
- The panel is between 1.0 mm and 9.5 mm thick.

- Disconnect the system from its voltage supply and secure it against being switched on again.
- Set the desired position of the series10 and drill the hole according to the drilling pattern.
- In case of a panel thickness of ≥ 2.5 mm, remove the flat seal (B).
- Slide the O-ring 18 x 2.2 (E) onto the series10 Signal.
- Connect the series10 (A) electrically according to the connection plan.
- Insert series10 (A) into the prepared hole.

The plug of the strand variant is intended for one-time connection.

Maintenance

Maintenance operations

Carry out the following maintenance operations at the specified intervals.

Maintenance operation	as needed	annually
Cleaning the surface	X	

series10 snap-in disassembly

- Disconnect the system from its voltage supply and secure it against being switched on again.
- Remove the series10 from the hole using a flat head screwdriver and disconnect the electrical connection.

Disposal

Different types of electrical and electronic components must be recycled according to their type. All applicable statutory, state and local laws and regulations must be complied with.

Manual updates

CAPTRON reserves the right to make changes to the contents of this manual as needed. The most current version can be found on our website www.captron.com.

Safety

General safety

All work on electrical systems or operating equipment may be carried out only by a specially qualified electrician according to the applicable electrotechnical regulations.

The safety of the system in which the series10 is integrated is the responsibility of the operator.



Improper work on electrical systems!

Electric shock can result in death or life-threatening injuries.

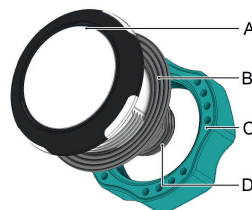
- Before working on electrical systems, disconnect them from their voltage supply and secure them against being switched on again.
- Work on electrical installations should be carried out only by qualified personnel in compliance with local and national electrical regulations and specifications.

Foreword

These operating instructions are intended for technicians/installers and operators and should be kept for future reference. Read these operating instructions carefully and make sure that you have fully understood the contents before installing or working with series10 Signal.

series10 Standard

A	series10 Signal
B	Flat seal (fitted)
C	Lock nut
D	Connection



- Disconnect the system from its voltage supply and secure it against being switched on again.
- Set the desired position of the series10 and drill the hole according to the drilling pattern.
- insert the series10 (A) into the prepared hole and screw the lock nut (C) on.
- position the series10 (A) and tighten the lock nuts with max. 1.5 Nm.
- Connect the series10 (A) electrically according to the connection plan.

The plug of the strand variant is intended for one-time connection.

series10 snap-in assembly

Requirements:

- Mounting surface is level and clean (maximum unevenness in mounting surface 0.1 mm).
- The panel is between 1.5 mm and 3.0 mm thick.

Maintenance operation	as needed	annually
Check cables for intactness and firm fit		X
Check screw connections for tightness		X

NOTICE

Abrasive aids and solvents contained in cleaning agents can attack the plastic of the button!

- Clean the surface of the button with a neutral cleaning agent or a damp microfiber cloth.
- Do not use abrasive aids such as steel wool and steel brushes.

Disassembly

series10 disassembly with lock nut

- Disconnect the system from its voltage supply and secure it against being switched on again.
- Disconnect the electrical connection and remove the lock nuts.

Imprint

The operating instructions have been authored and published by

CAPTRON Electronic GmbH
 Johann-G.-Gutenberg-Straße 7
 82140 Olching – Germany
 Tel.: +49 (0) 8142 44 88 – 160
sales@captron.com
www.captron.com

Copyright 2021

CANEO series10 Standard-Stainless Steel Signal 1.3